

3.2M Grand Format Inkjet Printer

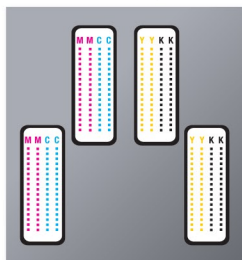
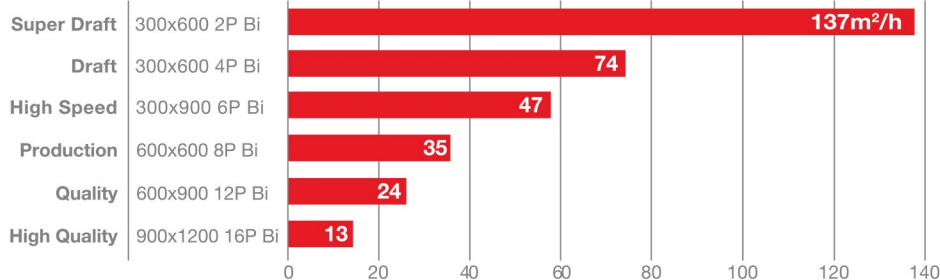
**Mimaki**™

# ***SWJ-320EA***

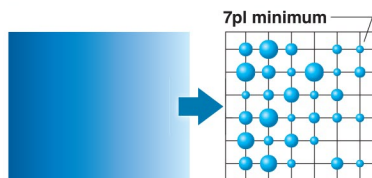
**For both indoor/outdoor signage**  
**THE BEST PRINTER TO WIN A COMPETITIVE MARKET**



 **encraje**

**Head Configuration****Print Speed****Proven High Resolution and Print Quality****Variable dot print with a minimum dot size of 7pl**

Mimaki's world proven technology produces unbeatable high definition and resolution prints. With three different dot sizes (7pl minimum) and a maximum resolution of 900 x 1,200dpi, the SWJ-320EA ensures fantastic print results without that grainy appearance.

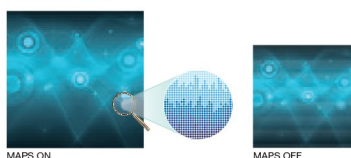
**Economical Solvent Ink "CS100"****Affordable yet reliable solvent ink "CS100"**

Not only is the CS100 ink (available in 2L bottles) more affordable than conventional ink cartridges, it also has exceptional stability and low propensity to clog nozzles.

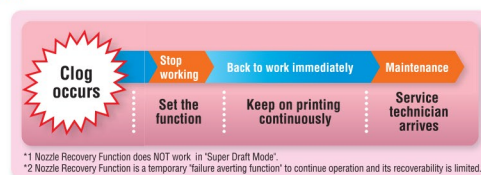
The CS100 ink also brings the same high Mimaki standards for colour accuracy, image durability and weatherability found in other conventional Mimaki solvent inks.

**Mimaki's Core Technologies****Mimaki Advanced Pass System (MAPS4)**

MAPS is designed to prevent banding. With every pass, it uses a unique algorithm that calculates the most effective way of jetting the ink drops to avoid visible banding. This constantly changes depending on ink colour, coverage and printing speed.

**Nozzle Recovery System (NRS)**

In the unlikely event of a nozzle dropping out during a long print run, the Nozzle Recovery System (NRS) enables the printer to keep on printing in excellent quality until maintenance is performed.

**Specifications**

| Item                           |                   | SWJ-320EA  |
|--------------------------------|-------------------|--|
| Head                           |                   | On-demand Piezo head<br>(4 printheads with 2 staggered configuration)      |
| Maximum width                  |                   | Up to 3,200mm (126")   |
| Print resolution               |                   | 300 / 600 / 900 / 1,200dpi   |
| Ink                            | Kind              | CS100 solvent ink (C, M, Y, K)   |
|                                | Ink supply system | 3L / each colour   |
| Media                          | Width             | Up to 3,250mm (128")   |
|                                | Weight            | Feeding: up to 100kg (220lbs) / Take-up: up to 40kg (88.2lbs)              |
| Drying device                  |                   | 3-way intelligent heater (Pre/Print/After), Drying fan unit                |
| Media feeding / Take-up device |                   | Equipped   |
| Interface                      |                   | USB 2.0, Ethernet  |
| Power specification            |                   | AC200 - 240 ± 10% , 50/60Hz ± 1Hz , 15A or less                            |
| Operational environment        |                   | Temperature: 20°C - 30°C (64-86°F)<br>Humidity: 35-65% RH (non condensing) |
| Dimensions (WxDxH)             |                   | 5,410 x 995 x 1,440mm (213" x 39.2" x 56.7")                               |
| Weight                         |                   | Less than 850kg (1,873.9lbs)   |
| Option for Twin Roll printing  |                   | OPT-J0394 - Small Take-up unit   |

**Applicable Ink**

| Item              | Item no. |            | Remarks       |
|-------------------|----------|------------|---------------|
| Solvent ink CS100 | Cyan     | CS100-C-BB | 2L ink bottle |
|                   | Magenta  | CS100-M-BB |               |
|                   | Yellow   | CS100-Y-BB |               |
|                   | Black    | CS100-K-BB |               |

**Software RIP combining usability and high performance****RASTER LINK 6 PLUS**

\*Bundled Item

**SWJ-320EA** Max Print Width **3,200mm**

• Some of the samples in this catalogue are artificial renderings. • Specifications, design and dimensions stated in this catalogue may be subject to change without notice (for technical improvements, etc.). • The corporate names and merchandise names written in this catalogue are the trademark or registered trademark of the respective corporations. • Inkjet printers print using extremely fine dots, so colours may vary slightly after replacement of the printing heads. Also note that if using multiple printer units, colours could vary slightly from one unit to another due to slight individual differences.