

The definitive edition of textile software RIP

TxLink3

Image add-ons

Logos, labels, seam and cut lines, texts, eyelets, and other images can be added using TxLink3 without the use of design software.



Caption

Add file name and text under the image



Label

Add texts to the image



Company Logo

Add logo file to the image. Alpha channels in the image (TIFF) are treated as transparent.



Eyelets

Add circles to the edges of the image



Seam Extension*

Add seam lines with preferred width all around the image. Images outside of lines are mirrored to make the lines unnoticeable.

* This function is activated in the standard and professional versions.

TxLink3

The definitive edition of textile software RIP

Compatible printer

Model	Lite	Standard	Professional
Tx300P-1800	○	○	○
TS300P-1800	○	○	○
JV150/CJV150	○	○	○
JV300/CJV300	○	○	○
Tx400-1800B/D	×	○	○
TS500-1800	×	○	○
TS500P-3200	×	○	○
Tx500-1800DS/B	×	○	○
JV5/TS5	×	○	○
Tx300P-1800B	○	○	○
Tx500P-3200DS	×	○	○
MM700-1800B	×	×	○
Tiger1800B/3200B	×	○	○

Tx300P-1800



TS300P-1800



Tx400-1800D



Tx400-1800B



TS500-1800



TS500P-3200



Tx500-1800DS



Tx500-1800B



Tx300P-1800B



Tx500P-3200DS



MM700-1800B



Tiger1800B/3200B



Future comparison chart

Feature		Lite	Standard	Professional
Color replacement	Raster data	○	○	○
	Vector data	○	○	○
	Color replacement to measured color	○	○	○
	Similar color chart printing	○	○	○
Pure color preservation	Primary color	○	○	○
	Secondary color	○	○	○
Step & Repeat	Shifting	○	○	○
	Mirroring	○	○	○
	Creating a repeating pattern without gap between each image	○	○	○
Profile creation	CMYK	○	○	○
	Multi color	○	○	○
Color combine		×	×	○
Image add-ons	Caption / Label / Logo	○	○	○
	Seam extension	×	○	○
Cutting		○	○	○
Job ticket		○	○	○

System requirement

OS	Windows Vista (32bit/64bit), Windows 7 (32bit/64bit) Windows 8 (32bit/64bit), Windows 8.1 (32bit/64bit) Windows10(32bit/64bit)
CPU	Intel Core i7 (2.66 GHz) or higher
Chip set	Intel genuine chip set
Memory	2GB or higher is recommended
HDD	160GB
Interface	USB2.0*1 / Ethernet*2
Compatible colorimeter	Barbieri Spectro LFP, ColorScout A+,i1 Pro,i1i10

*1: Two USB ports are required at least, one is for a dongle another one is for a connecting cable.
When a colorimeter is used, three USB ports are required.

*2: Ethernet is required for software authorization/activation process and connecting the printer.

Supported file formats

Raster	TIFF, PSD, JPEG, PNG, BMP, AI, PDF
Vector	PS/EPS, DCS2.0, AI, PDF



mimaki.com

MIMAKI ENGINEERING CO., LTD.

2182-3 Shigeno-Otsu, Tomi-city, Nagano, Japan
TEL: +81-268-64-2281

Mimaki Global Network

USA	MIMAKI USA, INC.	Europe	MIMAKI EUROPE B.V.
Brazil	MIMAKI BRASIL COMERCIO E IMPORTACAO LTDA	Indonesia	PT. MIMAKI INDONESIA
India	MIMAKI INDIA PRIVATE LIMITED	Australia	MIMAKI AUSTRALIA PTY. LTD.
Taiwan	MIMAKI ENGINEERING (TAIWAN) CO.,LTD.	China	SHANGHAI MIMAKI TRADING CO.,LTD.
Singapore	MIMAKI SINGAPORE PTE. LTD.		

High-performance software RIP produces a new color expression

TxLink3 supports the RGB color model and raster images, which are widely used in digital textile printing. In addition, useful function modules, including color replacement, step, and repeated pattern creation are also provided. Multicolor profile creation allows printing using spot colors and delivers a wider color gamut and higher color reproducibility compared with four-color process printing.

Three editions are available

TxLink3 Professional

High-end edition with all useful functions including "Color combine"

TxLink3 Standard

Optimizing digital textile print production

TxLink3 Lite

Entry model with select practical functions



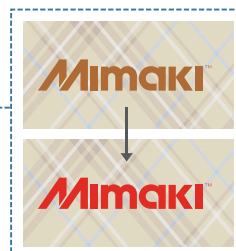
point 01

Color replacement

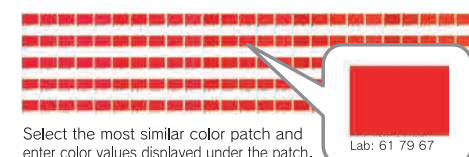
The TxLink3 can replace colors in a range of image data formats, including raster, vector, CMYK, and RGB. The target color is represented by specifying CMYK or Lab values. Color patches on the chart can also be used as the target color.

Changing the color to the target color

This function is useful if the printed color differs from the target color. The color data can be replaced to reproduce the target color.

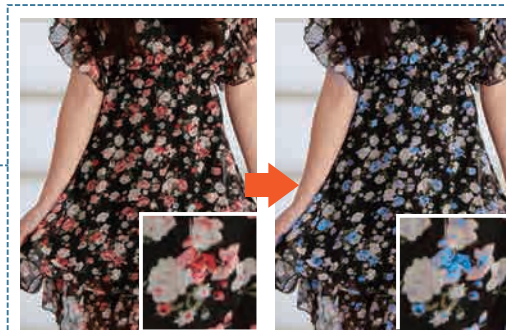


Similar color chart



Print Similar Colors

This function allows you to find appropriate color values for the target color. A similar color chart can be printed using the "Print Similar Colors" tool in the "Swatch Books" and "Named Colors" dialog boxes.



Color replacement on raster data broadens the range of colors

Color replacement is critical for textile printing. The TxLink3 offers simple color replacements on raster and vector data as well as the ability to produce different color patterns. Various color replacement functions can represent desired colors.

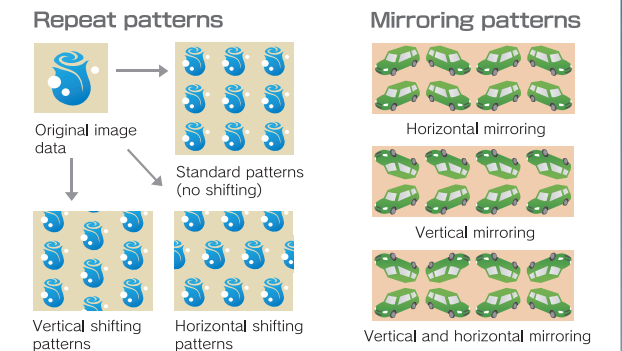
Workflow of color replacement

- 1 Load the image for printing
- 2 Select the color to be replaced
- 3 Specify the replacement color
- 4 Print

point 02

Step and repeat

One large seamless pattern can be created from smaller image data. Furthermore, several shifting and mirroring patterns are provided to add design variation.



point 03

Multicolor profile creation

A multicolor profile for CMYK and spot colors (blue, red, orange, and other colors) can be created. The profile is created automatically by following the wizard. Users only have to print and measure*1 the color chart.

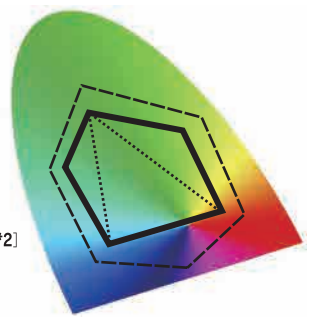
*1: Before measuring the color, please fix the color by heating. A colorimeter is not a standard feature of TxLink3.

A wide RGB gamut can be represented

Spot color broadens the color gamut range and produces smooth print results.

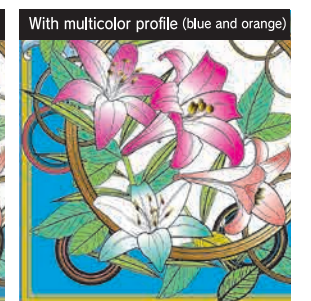
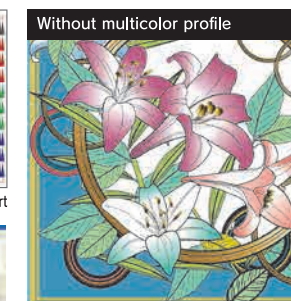
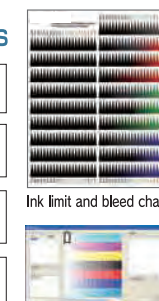
[Gamut range comparison*2]
 — RGM gamut
 CMYK 4-color profile
 — Multicolor profile

*2: The above gamut charts are for illustrative purposes only.



Multicolor profile creation procedures

- 1 Specify the ink color for each ink slot
- 2 Set the total ink limit
- 3 Measure the ink density error (adjustment of ink density gradation)
- 4 Multicolor profile creation



point 04

Exclusive feature for the professional version: Color combine

This function assigns color to each separated image data set(*3) and combines them into a single image data set. Colors can be assigned from color values, the swatch book, and measured colors. The stacking order of layers is easily changed. *3 Image data that is separately created for each color.

Digital textile printing reduces delivery time

