

TxLink3 Setup Guide ENGLISH

Thank you for purchasing our "TxLink3".
The explanation on setup of TxLink3 is provided in this document.

Environment

Printer:

TxLink3 Lite	JV300 Series, JV150 Series, CJV300 Series, CJV150 Series, TS300P-1800, Tx300P-1800
TxLink3 Standard	JV300 Series, JV150 Series, CJV300 Series, CJV150 Series, JV5 Series, TS300P-1800, TS500-1800DS, TS500P-3200, TS5-1600AMF, Tx300P-1800, Tx500-1800B, Tx500-1800DS, Tx400-1800B, Tx400-1800D, MM700-1800
TxLink3 Professional	JV300 Series, JV150 Series, CJV300 Series, CJV150 Series, JV5 Series, TS300P-1800, TS500-1800DS, TS500P-3200, TS5-1600AMF, Tx300P-1800, Tx500-1800B, Tx500-1800DS, Tx400-1800B, Tx400-1800D, MM700-1800

Image Format: PostScript2/3, EPS, AI, PDF (X-3), JPEG, BMP, PNG and TIFF

System Requirements:

OS	Windows XP(32bit), Windows Vista(32/64bit), Windows 7(32/64bit), Windows 8(32/64bit), Windows 8.1(32/64bit), Windows 10(32/64bit)
CPU	Intel Core i7(2.66GHz) or more.
Chip set	Intel chip set(*1)
Memory	1GB or more (2GB or more recommended)
HDD capacity	160GB or more.
Interface	USB 2.0 (*2), Ethernet
Spectrophotometer	Barbieri, ColorScout, X-Rite

(*1) If you do not use the one manufactured by Intel, an error may occur during output.

(*2) At least two ports are required; one for connecting the USB dongle and one for one printer.

Installation of TxLink3

Before installing TxLink3

- 1 Check whether you have the following items in hand:

- Installation CD of TxLink3
- USB dongle

If there is a missing item, contact a distributor in your district.

- 2 Check the Automatic Updates setting of Windows Update.

If you select "Automatic" on the [Automatic updates] of Windows Update, automatically update program may be installed at the set times and the PC may be restarted. To prevent automatic restart of the PC, select "Download updates for me, but let me choose when to install them." On the [Automatic Updates] of the [Control Panel].

- 3 Check the setting of the Windows' power supply.

When it is set to enter into the system standby (sleep) if no operation has been performed for a certain period of time, TxLink3 stops its operation and printing also stops even if it is in the printing operation. To prevent this, please confirm "System standby" setting.

- 4 Install the Mimaki driver.

To connect it with our printer, install the Mimaki driver. You can gain the Mimaki driver via two ways below:

- CD attached with printer
- Mimaki's website

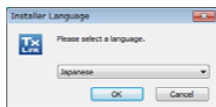
Installation of TxLink3

- 1 Before installation, remove the dongle if it is connected to the PC.

- 2 Insert the installation CD into the PC. When [Automatic] is displayed, select "Install the program". The installer starts.

- 3 Display CD menu. Select [Install TxLink3]

- 4 The [Installer Language] screen is displayed. Select the language that you will display, and click [OK].



- 5 The Setup Wizard starts. Click [Next].

- 6 The License Agreement is displayed. Read it and click [I Agree].

- 7 Specify [Install to...]. Select a folder in the drive with enough capacity. After selecting, click [Next].

- 8 Specify the setup type. If you have a dongle, select [Dongle Version (CodeMeter)] and click [Next].



- 9 Specify the start menu folder. Click [Install]. The installation starts.

- 10 The [User data] screen is displayed. Specify a folder to save the TxLink3 setting and temporary files. Specify a folder in the drive with enough capacity from [Change folder...]. Then, click [OK].



- 11 The message prompting you to connect the dongle with the PC is displayed. Set the USB dongle into the PC, and click the [OK] button.



- 12 The installation completion screen is displayed. Click [Next].

- 13 The installation wizard is terminated. Click [Finish].

Starting TxLink3

First, connect the USB dongle, and then start TxLink3.

When you use Windows XP, Vista and 7:

Select [All programs] - [TxLink3] - [TxLink3] from the [Start] menu.

When you use Windows 8 and 8.1:

Open the [All application] screen and select [TxLink3] - [TxLink3].

When you use Windows 10:

Select [All App] - [TxLink3] - [TxLink3] from the [Start] menu.

Settings of TxLink3

License Activation

For the initial start of TxLink3, various settings are required. License Activation use the Internet. If the PC in which you installed TxLink3 is not connected to the Internet and there is other PC that is connected to the Internet, you can perform license activation by using it.

- 1 At the initial start-up, [Mimaki Online License Activation] is displayed. Enter your company name, the e-mail address of the person in charge (*), select your country, enter your dealer name and choose your printer name. When you entered all, click [Activate].



(*)After activation, we send e-mail to this address.

[When you connect to the Internet]

- 1 The dialog on the left is displayed and license activation is completed.



[When you do not connect to the internet]

- 1 The dialog on the left is displayed. To perform license activation in the PC connected to the Internet, create the weblink file. Click [OK].



- 2 The [Save as...] dialog is displayed. The default name is "LicReq". Save it in a proper location. Though the TxLink3 setup screen is displayed next, cancel all and terminate it.

- 3 Copy the file you saved in the Step 2 into the PC connected to the Internet.

- 4 Double-click the weblink file. The web browser starts and it connects to the license activation screen.



Check that the contents is correct and click [Order and download License file Now].

- 5 The license file (extension*.eslic14) is downloaded. (Depending on the browser, as the saving dialog is displayed, specify a proper location.)

- 5 Copy the license file in the PC in which you installed TxLink3.

- 6 Double-click the license file, so license activation is finished. Please start TxLink3.

Print Environment Settings

About "Print Environment".

Print environment: It puts output information (printer, output port, output resolution, ICC profile setting etc...) into one file. If you set print environment, it enable to output in appropriate state

Additional method of "Print Environment".

Adding way for print environment is the following two ways.

- Download "print environment" file on Mimaki website and add it.
- Create your own print environment and add it.

Download "print environment" file on Mimaki website and add it

You can download print environment file on Mimaki official website. (It may not available depending on your models or ink.)

Go to download page on each printer. The file extension is *.PrEnv.

- 1 The [No print environment has yet been defined.] screen is displayed. Click the [Import] button.

- 2 [Open] window is displayed. Select downloaded printer environment file and click [Open].

- 3 [Print Environment] window is open and selected file will be added. Select this file and press [Settings]. [Printer settings] window will be displayed.

Then go to [Port setting] written as follows.

Create your own print environment and add it

You can create the print environment file as you want.

[How to create]

- 1 The [No print environment has yet been defined.] screen is displayed. Click the [Import] button.

- 2 The [Add Print Environment] screen is displayed.

Open [Driver] - [Mimaki], select your printer and setting, and click the [OK] button.

- 3 Next, the [Print settings] screen is displayed.

Go to Port setting written as follows.

Port setting.

Connect the PC with one printer, and turn on the power supply of the printer.

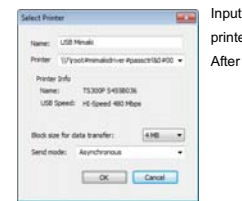
- 1 From the left list on the [Print settings] screen, select "Printer and Port". Click the "New" button.



- 2 The [Edit Printer Settings] screen is displayed. Click the [Add...] button.

- 3 The [Add Port] screen is displayed. [Add Port] screen is displayed. In case of connecting USB2.0 -> select "Mimaki USB2 Port". In case of connecting Ethernet cable -> Select "Mimaki TCP/IP" and click [Yes].

- 4 [When you select "Mimaki USB port"]

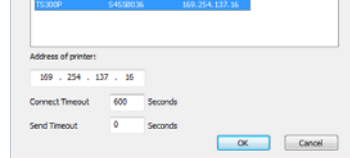


Input name on [Name] to recognize printer. (In case of setting multiple printers, you cannot put same name.)

After setting, click [OK] and close the window.

[When you select "Mimaki TCP/IP"]

- 1 Click [Search Printer] button. The printer which is connecting will be displayed on the list and select it. Click [OK] button.



- 5 Return to the [Edit Printer Settings] screen. Select "Mimaki" from the [Status Monitor] combo box. Click the [OK] button.

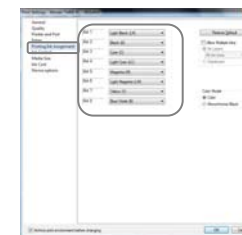
- 6 The [New Printer] screen is displayed. Enter the name by which you can identify the connected printer, and click OK.

- 7 Return to the [Print Settings] screen. The name that you entered in the [New Printer] screen is displayed in [Printer Name].

Ink setting

It is necessary to set the slot order of ink which is installed on printer depending on model, using ink.

- For Tx series make sure to perform this setting. Also, the file provided from Mimaki needs to this setting.
- Setting is also may be needed when using fluorescent color.
- DO NOT change the settings except above model, ink color.



From the left list on the [Print Settings] screen, select "Printing Ink Assignment".

[For Tx series]

- When you use Tx500 with six colors ink set: Two same color inks are mounted simultaneously on the printer, but you should select "(none)" on the larger slot number.
- In the conditions below, set as follows.
Red and orange are mounted simultaneously:
Red: "Red/ orange"
Orange: "Profile channel 8"

Blue and violet are mounted simultaneously:

- Blue: "Blue/ violet"
Violet: "Profile channel 8"
- In case of there is no appropriate color to selection items and when you want to put the color into ICC profile, select "Profile channel 8" - "Profile channel 12".
- In case of there is no appropriate color to selection items and does not want to put the color in ICC profile, using as replacement color, select "spot color1" - "spot color 6".

[When using fluorescent color on TS300P]

- In case of using "Print environment file" : DO NOT CHANGE this setting.
- In case of creating "Print environment file" on your own:

At initial setting, fluorescent color can be used for color replacement.

If you would like to create ICC profile which includes fluorescent color on TxLink3, change the setting as follows.

Before change (Use only for color replacement)	⇒	After change (Use for color replacement or ICC profile)	Ink color
Spot color 1(S1)	⇒	Profile channel 8 (P8)	Fluorescent yellow
Spot color 2(S2)	⇒	Profile channel 9(P9)	Fluorescent pink

Retrieve print settings from printer : TS300P, Tx300P, TS500P only

It is necessary to retrieve print settings (output resolution, passes etc...) from the connecting printer.



- 1) From the left list on the [Print Settings] screen, select "Device options."
- 2) Press [Retrieve print modes from printer] button.
- 3) [Device options] screen is displayed. Press [Retrieve] button. *When you select Ethernet port, it takes several seconds before you get print settings.
- 4) Message is displayed. Press [OK] button and close [Device options] screen.



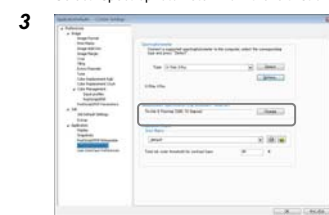
After setting them, click the [OK] button and close the [Print Settings] screen.

Spectrophotometer setting

- 1 Select [Tool]-[Option] menu from TxLink3 main screen.

- 2 [Application Defaults] screen is displayed.

Select "Spectrophotometer" from the left list on the screen.



Click [Change] button on "Measurement Specification" area. [Measurement Specification] screen is displayed. Select "Textile & Painting (D65, 10 Degree)" and press [OK] button.

Click [OK] button on [Application Defaults] screen.

Notice

- It is strictly prohibited to write or copy a part or whole of TxLink3 documents without our approval.
- The contents of TxLink3 documents may be subject to change without notice.
- Due to improvement or change of this software, the description of this document could be partially different in specification, for which your understanding is requested.
- It is strictly prohibited to copy this software to other disk (excluding the case for making backup) or to load on the memory for the purpose other than executing it.
- With the exception of what is provided for in the warranty provisions of MIMAKI ENGINEERING CO., LTD., we do not assume any liability against the damages (including but not limited to the loss of profit, indirect damage, special damage or other monetary damages) arisen out of the use or fail-ure to use of this product. The same shall also apply to the case even if MIMAKI ENGINEERING CO., LTD. had been notified of the possibility of arising damages in advance. As an example, we shall not be liable for any loss of the media (works) made using this product or indirect damages caused by the product made using this media.

Privacy Policy

Please read the following web site for our Privacy Policy:

<http://mimaki.com/privacy.html>