

■ Specifications

Compatible Printers	CJV 30 Series JV Series UJV-160	UJF605R II UJF605C II JF Series JFX-1631	TPC Series TS3 Series TS5 Series DS Series DM 2 Series TX Series GP Series	Printers compatible with RasterLink Pro 5 Series.
Compatible RIP and other Software	Fine Cut 7 Simple Studio *Fine Cut 7 and Simple Studio are required for printing and cutting with CJV 30 Series		Fine Cut 7 Simple Studio *Fine Cut 7 and Simple Studio are required for printing and cutting with TPC Series	Raster Link Pro v5.0 or more Raster Link GP v2.0 or more Raster Link UJ v2.0 or more Raster Link Pro II v1.0 or more Raster Link Pro III v1.0 or more Raster Link Pro 4 Series v1.0 or more
OS Compatibility	Windows Vista Business (32 Bit) Windows Vista Ultimate (32 Bit) Windows Professional XP SP 2 / Windows 2000 SP4			
CPU	Core 2 Duo 1.8 GHz or more (2.66 GHz or more for JV 5Series)			
Memory	1 GB or more			
HDD Space	HDD Space 30 GB or more (NTFS Format)			
Interface	IEEE 1394, USB 1.1 / 2.0			
File Formats	TIFF / PS / EPS / JPEG / BMP / PDF		TIFF / BMP	

*RasterLink Pro 5 SG is bundled with CJV 30 Series / JV 33 Series / JV 5 Series / UJV-160.
 *RasterLink Pro 5 IP is bundled with JFX-1631.
 *RasterLink Pro 5 TA is bundled with TPC Series / TS3 Series / TS5 Series.
 *Fine Cut 7 / Simple Studio are bundled with CJV 30 Series / TPC Series.

■ COLORIMETER

i1 Pro / i1 io / i1 iSis
 *not compatible with i1 Display
 DTP 41
 Spectro scan
 (X-Rite, Inc.)

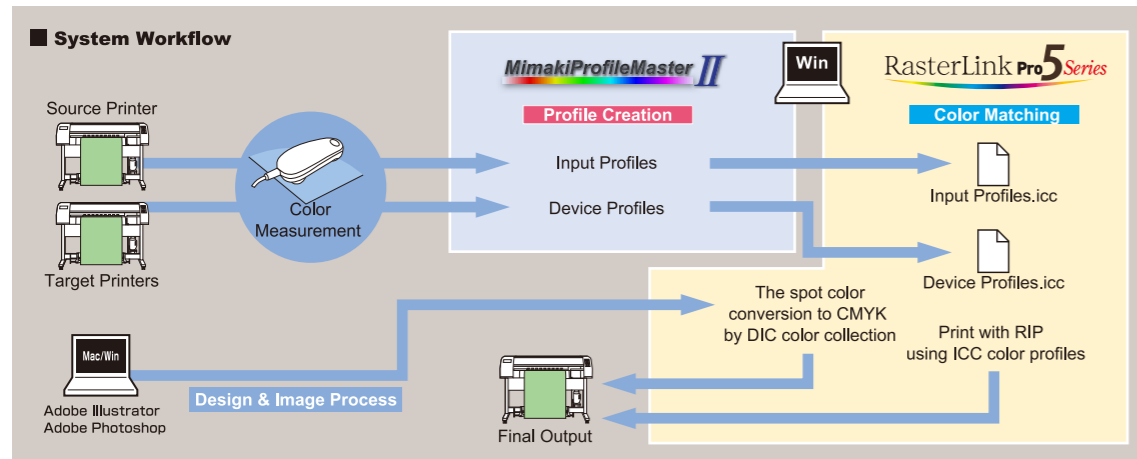
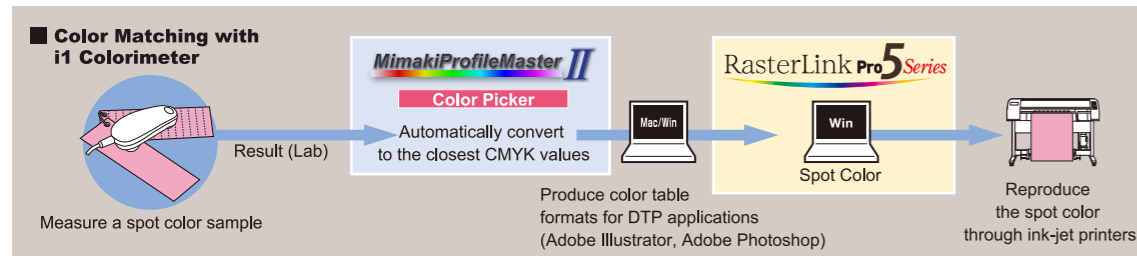


New Color Management System Powered by Innovations

MimakiProfileMaster II



Find an Ideal Color
 Match it with Your Color



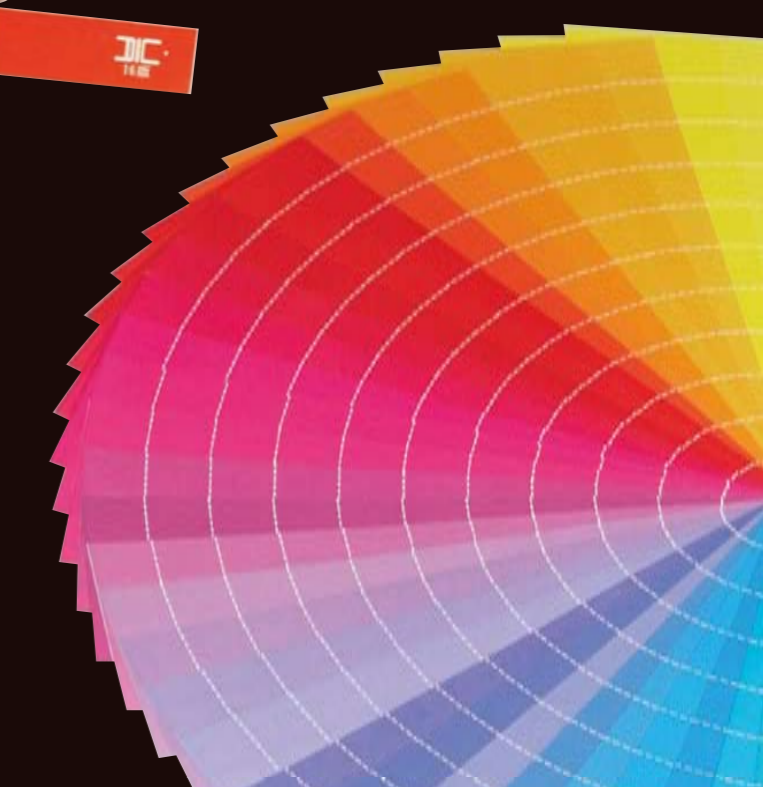
●Some of the samples in this catalogue are artificial renderings. ●Specifications, design and dimensions stated in this catalogue may be subject to change without prior notice. (for technical improvements, etc). ●The corporate names and merchandise names written on this catalogue are the trademark or registered trademark of the respective corporations. ●Inkjet printers print using extremely fine dots, so colors may vary slightly after replacement of the print heads. Also note that if using multiple printer units, colors could vary slightly from one unit to other unit due to slight individual differences.



Web update function is now available

Next Generation Software with 16 Bit Rendering

RasterLink Pro 5 Series



MIMAKI ENGINEERING CO., LTD.

2182-3 Shigeno-otsu, Tomi-city, Nagano 389-0512, Japan
 Tel: +81-268-78-2268
 trading@mimaki.jp www.mimaki.co.jp

MIMAKI USA, INC.

150 Satellite Boulevard, suite A, Suwanee, Georgia 30024, U.S.A
 Atlanta +1-888-530-3988 Boston +1-888-530-3986
 Los Angeles +1-888-530-3987 Chicago +1-888-530-3985
 www.mimakiusa.com

MIMAKI EUROPE B.V.

Stammerdijk 7E,
 1112 AA Diemen, The Netherlands
 Tel: +31-20-4627-640
 www.mimakieurope.com

The Most Precise Color

RasterLink Pro 5 Series assure higher print quality. The newly developed RIP software, RasterLink Pro 5 Series are equipped with 16bit rendering and are compatible with Postscript 3.

Web update function is now available

Next Generation Software with 16 Bit Rendering

RasterLink Pro 5 Series

Always the Same Color

A colorimeter helps to achieve consistent print quality on different media and with different printers. Mimaki Profile Master II maximizes printer performance.

New Color Management System Powered by Innovations

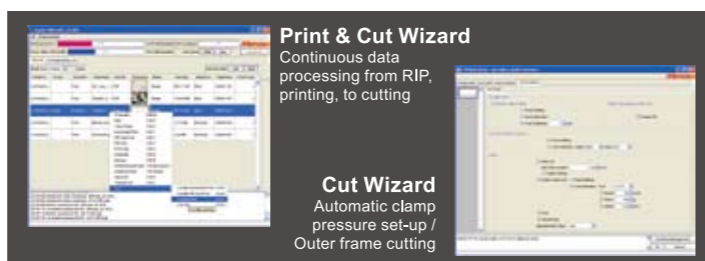
MimakiProfileMaster II

Benefit 1

Continuous Print & Cut

Efficient Workflow

Continuous print & cut is possible by creating cutting data with Illustrator and Fine Cut 7. Cutting conditions can be set in RasterLink Pro 5 (for CJV30 / TPC Series).



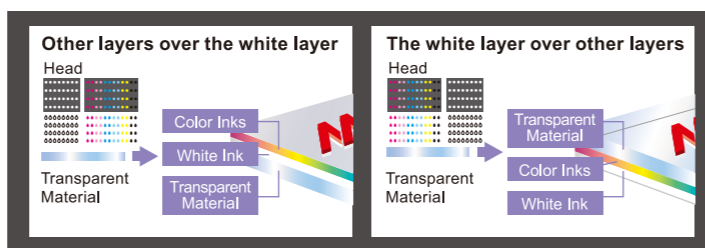
Benefit 2

White Layer Printing

Vivid Image Mimaki Original

Mimaki's original white layer printing helps to create more vivid images on transparent materials. This is made possible by printing a white layer either under or over the CMYK layers.

- The white layer can be printed either under or over other layers.
- The white layer area can be customized to suit the job design.
- The white and color layers are printed simultaneously for more precise layer registration.



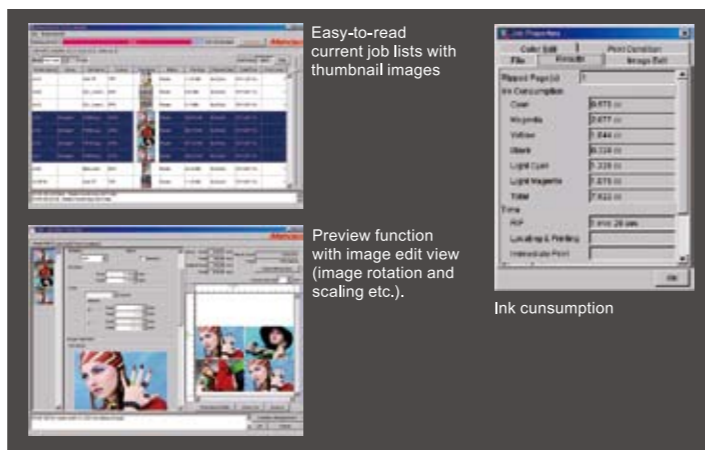
Benefit 3

Easy Operation

Maximum Productivity

RasterLink Pro 5's intuitive interface enhances usability to help even non-professionals generate outstandingly brilliant prints. New image editing functions maximize productivity.

- Automatic Printing Function helps to reduce an operator's work by sending print jobs to hot folder. It will eliminate the print process on RIP software.
- Print and edit conditions can be printed on the printed matter, which helps to check the setting of a print job.
- Output preview function.
- Media cost savings are achieved by unlimited nesting of multiple images.
- Image-editing functions such as tiling, trimming, image resizing, rotation, and copying.
- Ink Consumption of each color for a ripped profile is displayed.
- The web update function is added to RasterLink Pro5 to easily achieve both software update and profile download. **NEW**

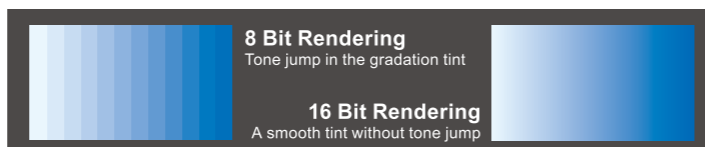


Benefit 4

16 Bit Rendering

Smooth Gradation

16 bit rendering generates smoother gradations resulting in the finest quality for outstanding prints. 16 bit rendering maximizes the output potential of all your Mimaki printers.



Benefit 1

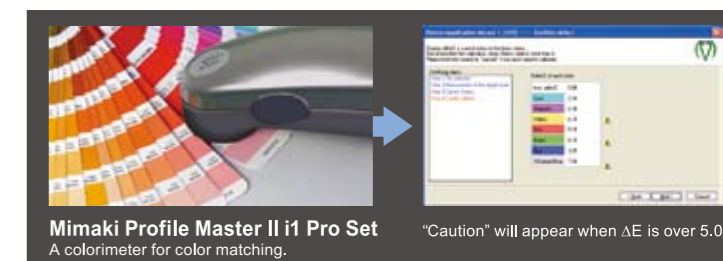
Color Picker System

Automatic Color Matching **NEW**

The color picker system automatically converts a spot color to the closest CMYK values by directly reading a color chip. It will compute CMYK values based on printer / media properties and allow an operator to check ΔE^* . The color picker system is equipped with the PANTONE Color Library.

*Color differences are measured based on ΔE .

- A preview function to check the output quality.
- An approximate color will be selected when ΔE is below 2.0.



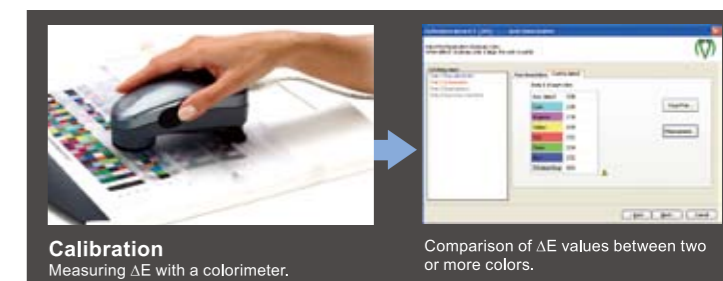
Benefit 2

Calibration

Consistent Result

When a print head is replaced, colors may slightly differ. The printer calibration detects and adjusts color differences* to maintain color consistency.

*Color differences are measured based on ΔE .



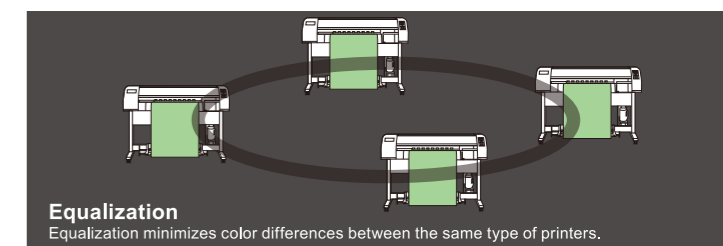
Benefit 3

Equalization

Same Colors from Every Printer

Equalization helps to create consistency between the same type of printers*. It allows quick response to an urgent or bulk order by running several printers simultaneously.

*Color differences are measured based on ΔE .



Benefit 4

Device Profile

Predictable Colors

Mimaki Profile Master II helps to easily create a high quality ICC device profile that corresponds to media / ink differences. Your original ICC device profiles enhance properties of all printers and inks. Mimaki Profile Master II is also equipped with the Input Profile function, which will enable an operator to create both input and output profiles.

